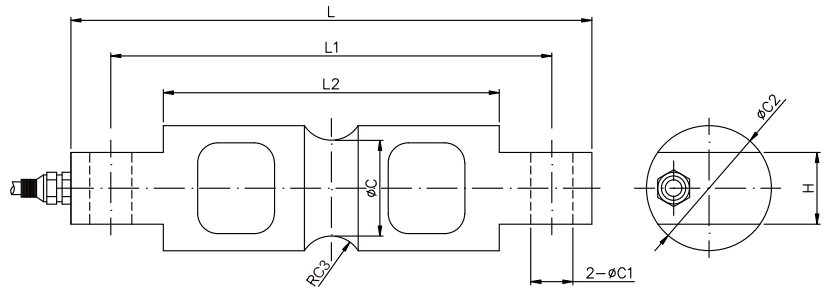
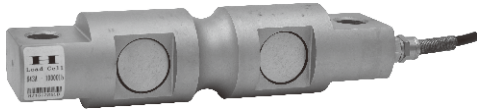


## ALLOY STEEL / STAINLESS STEEL 合金钢/不锈钢



### 尺寸 DIMENSIONS

#### Rate Capacity 量程

	C	C1	C2	C3	L	L1	L2	H
2.268-4.536	37.6	16.8	43.2	12.7	206.3	174.8	133.1	28.5
9.07	37.6	16.8	49.3	12.7	206.3	174.8	133.1	28.5
13.608-27.216	69.3	26.9	76.2	25.4	260.4	215.9	164.8	60.2
45.36	82.3	26.9	95.3	25.4	285.8	241.3	190.2	63.5
68.04	92.5	26.9	99.1	38.1	285.8	241.3	190.2	71.1
90.72	131.1	39.6	136.7	50.8	409	330.2	254	116.8

klb/inches(conversion of above dimensions 由以上尺寸转换)

5-10	1.48	0.66	1.70	0.50	8.12	6.88	5.24	1.12
20	1.48	0.66	1.94	0.50	8.12	6.88	6.49	1.12
30-60	2.73	1.06	3.00	1.00	10.25	8.50	6.49	2.37
100	3.24	1.06	3.75	1.00	11.25	9.50	7.49	2.50
150	3.64	1.06	3.90	1.50	11.25	9.50	7.49	2.80
200	5.16	1.56	5.38	2.00	16.10	13.00	10.00	4.60

### 技术参数 SPECIFICATIONS

Full Scale Output 灵敏度输出	$2.0 \pm 0.1\% mV/V$	Recommended Excitation 使用电压	10V(15V Maximmm)
Zero Balance 零点输出	$\pm 0.04 mV/V$	Insulation Resistance 绝缘阻抗	$>2[50V DC]G \Omega$
Nonlinearity 非线性	$< \pm 0.03\%$	Nominal Temperature Range 工作温度	$-10^{\circ}C$ to $40^{\circ}C$ / $14^{\circ}F$ to $104^{\circ}F$
Repeatability 重复性	$< \pm 0.03\%$		
Hysteresis Error 滞后	$< \pm 0.03\%$	Safe Overload 安全过载	150% of full scale
Creep in 30 min 30分钟蠕变	$< \pm 0.05\%$	Breaking Overload 极限过载	300% of full scale
Input Resistance 输入电阻	$775 \Omega \pm 5$	IP Rating 防护等级	IP67/IP68
Output Resistance 输出电阻	$702 \Omega \pm 2$	Cable Color Code 颜色码	Exc(输入)+:Red(红);Exc(输入) -Black(黑);Sig(输出)+Green(绿); Sig(输出)-:Whit(白) Shield Bare(屏蔽)
Element Materia 材质	Alloy steel/Stainless steel 合金钢/不锈钢		

## 643A

### Special Features 特征

- ◆ 符合OIML认证指标
- ◆ Comply with OIML C3
- ◆ 高精度
- ◆ High accuracy
- ◆ 合金钢
- ◆ Alloy steel construction
- ◆ 易于安装, 性能稳定
- ◆ Easy installation reliable performance
- ◆ 合金钢/不锈钢
- ◆ Alloy/Stainless steel available