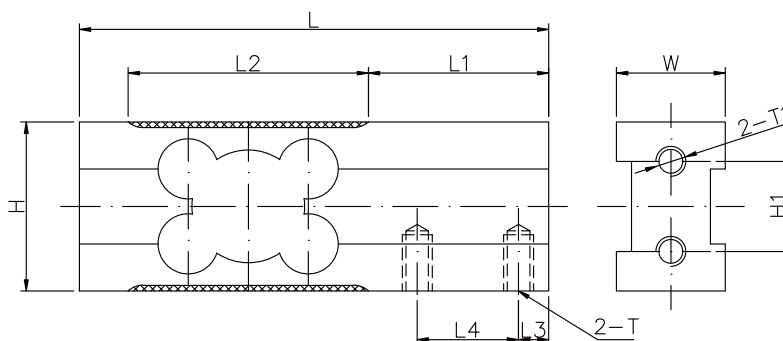
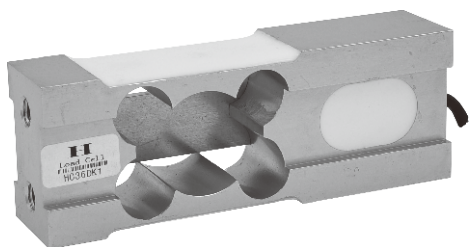


618D

ALUMINUM
铝合金



尺寸 DIMENSIONS

Rate Capacity
量程

	L	L1	L2	L3	L4	W	H	H1	T	T1
kg/mm										
50-300	125	48	64	8	27	29	45	24	M8深16	M8深16
lb/inches(conversion of above dimensions 由以上尺寸转换)										
110.2-661.4	4.92	1.89	2.52	0.31	1.06	1.14	1.77	0.94	M8DP0.63	M8DP0.63

技术参数 SPECIFICATIONS

Full Scale Output 灵敏度输出	2.0 ± 10% mV/V	Recommended Excitation 使用电压	10V(15V Maximmm)
Zero Balance 零点输出	± 0.02mV/V	Reference Max.Platform Size 最大秤台尺寸	250*350mm
Nonlinearity 非线性	< ± 0.017%	Insulation Resistance 绝缘阻抗	>2[50V DC]GΩ
Repeatability 重复性	< ± 0.017%	Nominal Temperature Range 工作温度	-10°C to 40°C / 14°F to 104°F
Hysteresis Error 滞后	< ± 0.017%	Safe Overload 安全过载	150% of full scale
Creep in 30 min 30分钟蠕变	< ± 0.023% < ± 0.023%	Breaking Overload 极限过载	200% of full scale
Input Resistance 输入电阻	405Ω ± 10	IP Rating 防护等级	IP66
Output Resistance 输出电阻	350Ω ± 3	Cable Color Code 颜色码	Exc(输入)+:Red(红);Exc(输入)-:Black(黑);Sig(输出)+:Green(绿);Sig(输出)-:Whit白 Shield Bare(屏蔽)
Element Materia 材质	Aluminum 铝合金		

618D

Special Features
特征

- ◆ 通常精度可达C3,5000分度值
- ◆ 角差修正
- ◆ 台面最大尺寸250*350mm
- ◆ IP66防护
- ◆ High accuracy regulations up to 5000d for Scales class III
- ◆ Off-center load compensated
- ◆ Max.platform size:250*350mm
- ◆ IP66 protection